



SYLLABUS

Session: 2026 – 2027

Class – III

**“The purpose of
education is to turn
mirrors into
windows.”**

INDEX

Index are clickable,
click on the subject to go directly to that page

Subject	Page No
English.....	3
Hindi.....	12
Maths.....	25
Science.....	28
Social Science.....	33
Computer.....	37
GK & Reasoning.....	39
Art	48
Health and Phy. Edu.....	50

SUBJECT– ENGLISH

Prescribed Books:

- 1. The English Cruise-3 (S.Chand Publications)**
- 2. Step-up English Grammar and Composition-3 (Goyal Brothers Prakashan)**
- 3. Cursive Writing-3 (Modak Publications)**

TERM-1

COURSE FOR PERIODIC TEST-1

LITERATURE

The English Cruise-3

- 1.The Missing Peasant
- 2.The Telephone

Note: Questions done under '*Values and Life Skills*' section in *The English Cruise* will be assessed in Half Yearly Examination only.

GRAMMAR

Step-up English Grammar and Composition-3

4. Nouns
5. Nouns: Common and Proper
7. Nouns: Gender
10. Articles
27. Punctuation

+ the 'Grammar' section from the chapters of *The English Cruise* (PT-1 syllabus)

Cursive Writing-3

Page no. 3 to 12

CREATIVE WRITING SKILLS

Descriptive Paragraph (Describe the given picture in 40-50 words.)

UNSEEN COMPREHENSIONS

COURSE FOR HALF YEARLY EXAMS

LITERATURE

The English Cruise-3

3. Handwashing (POEM)
4. Anna's Diary
5. Kavya's Tiffin Gang
6. Too Busy (POEM)

+ the chapters from Periodic Test-1 mentioned below:

1. The Missing Peasant
2. The Telephone

NOTE: Questions done under 'Values and Life Skills' section in *The English Cruise* will be assessed in Half Yearly Examination only.

GRAMMAR

Step-up English Grammar and Composition-3

9. Pronouns
11. Adjectives

+ the chapters from Periodic Test-1 mentioned below:

4. Nouns
5. Nouns: Common and Proper
7. Nouns: Gender
10. Articles
27. Punctuation

+ the 'Grammar' section from the chapters of *The English Cruise* (PT-1 + Half Yearly syllabus)

Cursive Writing-3

Page no. 41 to 52

CREATIVE WRITING SKILLS

a) Diary Entry (40-50 words)

1. Your parents took you out for the day. You had a wonderful time. Write a diary entry about the day.

2. You visited a zoo with your family and saw many animals. You enjoyed the day a lot. Write a diary entry about the visit.
3. Your school organised a picnic for your class. You played games and had fun with your friends. Write a diary entry about it.
4. It rained heavily and you enjoyed making paper boats and eating hot snacks. Write a diary entry about it.

b) Writing an Invitation (40-50 words)

1. Your birthday is next week. Write an invitation to your friend inviting him/her to your birthday party.
2. You are organising a small picnic with your friends. Write an invitation inviting your cousin to join you.
3. Your parents are celebrating their wedding anniversary. Write an invitation to invite your relatives.
4. Your family is organising a housewarming party. Write an invitation to your grandparents inviting them to the party.

UNSEEN COMPREHENSIONS

TERM-2

COURSE FOR PERIODIC TEST-2

LITERATURE

The English Cruise-3

- 7.The Red Flower
- 8.The Cocoon (POEM)
- 9.Boond: To the Mountains and Back
- 10.A Visit to Mawlynnong

NOTE: Questions done under 'Values and Life Skills' section in *The English Cruise* will be assessed in Annual Examination only.

GRAMMAR

Step-up English Grammar and Composition-3

14. Am, Is, Are
15. Was, Were
16. Has, Have, Had

- 17. Simple Present Tense
- 19. Simple Past Tense
- 20. The Simple Future Tense
- 23. Adverbs
- 24. Prepositions

+ the 'Grammar' section from the chapters of *The English Cruise* (PT- 2 syllabus)

Cursive Writing-3

Page no. 53 to 64

CREATIVE WRITING SKILLS

a) Informal Letter (40-50 words)

1. Write a letter to your cousin who lives in a village. Invite her/him to visit you in the city during the summer vacation. You may share your plans for activities you may have planned for them.
2. Write a letter to your friend telling her/him about a drawing competition you participated in your school.
3. Write a letter to your friend sharing your experience about your first day in a new school.
4. Write a letter to your elder sister telling her about your favourite subject.

b) Informative Paragraph (40-50 words)

1. The Importance of Staying Healthy
2. The Role of Trees in Nature
3. The Importance of Clean Surroundings
4. The Benefits of Reading Books

UNSEEN COMPREHENSIONS

COURSE FOR ANNUAL EXAMS

LITERATURE

The English Cruise-3

11. My Brother's Wheelchair (POEM)

12. The King Who Stopped the River

+ the chapters from Periodic Test-2 mentioned below:

7. The Red Flower

8. The Cocoon (POEM)

9. Boond: To the Mountains and Back

10. A Visit to Mawlynnong

NOTE: Questions done under 'Values and Life Skills' section in *The English Cruise* will be assessed in Annual Examination only.

GRAMMAR

Step-up English Grammar and Composition-3

25. Conjunctions

+ the chapters from Term-1 mentioned below:

10. Articles

11. Adjectives

27. Punctuation

+ the chapters from Periodic Test-2 mentioned below:

14. Am, Is, Are

15. Was, Were

16. Has, Have, Had

17. Simple Present Tense

19. Simple Past Tense

20. The Simple Future Tense

23. Adverbs

24. Prepositions

+ the 'Grammar' section from the chapters of *The English Cruise* (PT-2 + Annual

syllabus and the chapters: The Telephone and Anna's Diary)

Cursive Writing-3

Page no. 65 to 74

CREATIVE WRITING SKILLS

a) Descriptive Paragraph (Picture based 40-50 words) from Periodic Test-1

b) Diary Entry (40-50 words) from Half Yearly syllabus

1. Your parents took you out for the day. You had a wonderful time. Write a diary entry about the day.
2. You visited a zoo with your family and saw many animals. You enjoyed the day a lot. Write a diary entry about the visit.
3. Your school organised a picnic for your class. You played games and had fun with your friends. Write a diary entry about it.
4. It rained heavily and you enjoyed making paper boats and eating hot snacks. Write a diary entry about it.

c) Informal Letter (40-50 words) from Periodic Test-2

1. Write a letter to your cousin who lives in a village. Invite her/him to visit you in the city during the summer vacation. You may share your plans for activities you may have planned for them.
2. Write a letter to your friend telling her/him about a drawing competition you participated in your school.
3. Write a letter to your friend sharing your experience about your first day in a new school.
4. Write a letter to your elder sister telling her about your favourite subject.

UNSEEN COMPREHENSIONS

QUESTION PAPER PATTERN FOR PERIODIC TEST-I AND PERIODIC TEST-II

Time: 1½ hrs

M.M. :40

Section-A (READING)

One unseen comprehension will be given (120-140 words)

To answer the questions based on the

given passage in the form of:

	No. of Ques.	Marks		
• Question-Answers	3	x	2	= 6
• True/False	2	x	1	= 2
• Complete the sentence	1	x	1	= 1
• Synonym/Antonym	1	x	1	= 1

Total 10

Section-B (CREATIVE WRITING SKILLS)

One writing skill will be given.

	1	x	6	= 6
--	---	---	---	-----

Total 6

Section-C (GRAMMAR)

Six questions, with two subparts each,

from the Grammar syllabus will be given.

	6	x	2	= 12
--	---	---	---	------

Total 12

Section-D (LITERATURE)

1. To answer the questions based on the given extract from the lessons/poems

	2	x	1	= 2
--	---	---	---	-----

2. To answer the questions in about

20 to 30 words (2 out of 3)

	2	x	2	= 4
--	---	---	---	-----

3. Word Meanings (2 out of 3)

	2	x	1	= 2
--	---	---	---	-----

4. Make Sentences

	2	x	1	= 2
--	---	---	---	-----

5. Work with Words

	2	x	1	= 2
--	---	---	---	-----

Total 12

**QUESTION PAPER PATTERN FOR
HALF YEARLY EXAMS AND ANNUAL EXAMS**

Time: 3hrs

M.M. : 80

Section-A (READING)

Two unseen comprehensions will be given.

1. Unseen Comprehension (140 to 160 words)

To answer the questions based on the given passage in the form of:

No. of Ques. Marks

• Question-Answers	3	x	2	=	6
• True/False	2	x	1	=	2
• Complete the sentence	1	x	1	=	1
• Synonym/Antonym	1	x	1	=	1
					Total 10

2. Unseen Comprehension (100 to 120 words)

To answer the questions based on the given

CASE based passage in the form of:

• Multiple Choice Questions (MCQs)	4	x	1	=	4
• Fill in the blank	1	x	1	=	1
• Synonym/Antonym	1	x	1	=	1
					Total 6

Section-B (CREATIVE WRITING SKILLS)

• Two writing skills will be given.	2	x	6	=	12
• To answer a self-made 'Expressing Opinion' question based on the similar situation as given under ' <i>Value and Life Skills</i> ' section in <i>The English Cruise</i> (30 - 40 words)	1	x	4	=	4
					Total 16

Section-C (GRAMMAR)

Eleven questions, with two subparts each, from the Grammar syllabus will be given.

$$11 \times 2 = 22$$

Total 22

Section-D (LITERATURE)

1. To answer the questions based on the two extracts given from the lessons/poems

$$6 \times 1 = 6$$

2. To answer the questions in about 20 to 30 words each (4 out of 5)

$$4 \times 2 = 8$$

3. Word meanings (4 out of 5)

$$4 \times 1 = 4$$

4. Make Sentences (4 out of 5)

$$4 \times 1 = 4$$

5. Work with Words

$$4 \times 1 = 4$$

Total 26

NOTE:

1. Same sentences done under the 'Grammar' section in *The English Cruise* and *Step-up English Grammar and Composition* will not be given in the examination.
2. Seen Comprehension(s) will be asked from anywhere within the lessons/poems. Therefore, the students should prepare the related lessons/poems thoroughly.
3. 50% of the words for Make Sentences will be from the notebook and 50% will be self-made.
4. Word Dictation and Paragraph Dictation will be given from the lessons of *The English Cruise*.
5. Dictation will be taken once a week in the class for practice.
6. In each term, during last week of every month, Word Dictation and Paragraph Dictation of 5 marks each will be taken.
7. The average marks of the best two dictations will be included in the Subject Enrichment of each term.

विषय - हिन्दी

पुस्तकें -

- | | |
|---------------------------------------|----------------------|
| 1) नवीन सुबोध भारती हिन्दी पाठमाला -3 | संस्कृति प्रकाशन |
| 2) गुलमोहर हिंदी व्याकरण- 3 | लैंग्वेज हाउस |
| 3) हिन्दी लेखन विधा-3 | लेखिका -सलोनी गुप्ता |

Term-1

अर्धवार्षिक पूर्व परीक्षा (Periodic Test-1)

खण्ड-क अपठित बोध-

गद्यांश पर आधारित प्रश्न

खण्ड-ख व्याकरण अनुभाग-

1. भाषा और व्याकरण
2. संख्या-ज्ञान (1 से 50 तक) हिंदी अंकों व शब्दों में
3. वचन परिवर्तन (केवल शब्द)
4. मुहावरे (केवल अर्थ) (पृष्ठ संख्या- 68 - 70)

खण्ड-ग पाठ्य पुस्तक- नवीन सुबोध भारती

पाठ-1 ऐसा वर दो (कविता)

पाठ-2 प्रजा का धन (कहानी)

खण्ड-घ रचनात्मक लेखन-

औपचारिक पत्र लेखन - अवकाश हेतु प्रधानाचार्य को प्रार्थना पत्र

हिंदी लेखन विधा पृष्ठ संख्या - 2 से 12

अर्धवार्षिक परीक्षा (Half Yearly Examination)

खण्ड-क अपठित बोध-

गद्यांश पर आधारित प्रश्न

खण्ड-ख व्याकरण अनुभाग-

5. सर्वनाम (परिभाषा, भेद एवं छाँटना)
6. लिंग परिवर्तन(केवल शब्द)
7. विराम चिह्न (पूर्णविराम, अल्पविराम, प्रश्नवाचक)

+अर्धवार्षिक पूर्व परीक्षा के व्याकरण भाग के निम्नलिखित उपविषय भी अर्धवार्षिक परीक्षा में सम्मिलित किए गए हैं-

1. भाषा और व्याकरण
2. वचन परिवर्तन (केवलशब्द)
3. संख्या-ज्ञान(1 से 50 तक) हिंदी अंकों व शब्दों में
- 4.मुहावरे (केवल अर्थ) (पृष्ठ संख्या 68 - 70)

खण्ड-ग पाठ्य पुस्तक - नवीन सुबोध भारती

पाठ-3 हो गया काम तमाम (कहानी)

पाठ-4 लौटा दो मेरा बचपन! (कविता)

पाठ-5 गुनगुनी धूप (कहानी)

+अर्धवार्षिक पूर्व परीक्षा के निम्नलिखित पाठ भी अर्धवार्षिक परीक्षा में सम्मिलित किए गए हैं-

पाठ-1 ऐसा वर दो (कविता)

पाठ-2 प्रजा का धन (कहानी)

खण्ड-घ रचनात्मक लेखन-

- 1) औपचारिक पत्र लेखन - अवकाश हेतु प्रधानाचार्य को प्रार्थना पत्र
- 2) अनुच्छेद लेखन (विकल्प सहित)

(अनुच्छेद के विषय विद्यार्थियों के बौद्धिक स्तरानुसार होंगे।)
हिंदी लेखन विधा पृष्ठ संख्या - 13 से 22

Term-2

वार्षिक पूर्व परीक्षा (Periodic Test-2)

खण्ड-क अपठित बोध-

गद्यांश पर आधारित प्रश्न

खण्ड-ख व्याकरण अनुभाग-

1. ध्वनि एवं वर्ण
2. संयुक्त व्यंजन
3. अशुद्धि-शोधन (केवल शब्द)
4. विलोम शब्द
5. वाक्यांशों के लिए एक शब्द

खण्ड-ग पाठ्य पुस्तक- नवीन सुबोध भारती

पाठ-6 प्यारे से दो पत्र (पत्र)

पाठ-7 राजा का न्याय (नाटक)

पाठ-8 कागज़ की नाव (कविता)

पाठ-9 शहर सुंदर बनाएँ (लेख)

खण्ड-घ रचनात्मक लेखन -

लघुकथा लेखन -(कोई मनपसंद कहानी अपने शब्दों में लिखना)

हिंदी लेखन विधा पृष्ठ संख्या - 23 से 32

वार्षिक परीक्षा (Annual Examination)

खण्ड-क अपठित बोध

गद्यांश पर आधारित प्रश्न

खण्ड-ख व्याकरण अनुभाग

1. पर्यायवाची शब्द
2. विशेषण (परिभाषा एवं छाँटना)
+ अर्धवार्षिक पूर्व परीक्षा, अर्धवार्षिक परीक्षा एवं वार्षिक पूर्व परीक्षा के व्याकरण अनुभाग के निम्नलिखित उपविषय भी वार्षिक परीक्षा में सम्मिलित किए गए हैं -
3. भाषा और व्याकरण
4. ध्वनि एवं वर्ण
5. संयुक्त व्यंजन
6. वचन परिवर्तन (केवल शब्द)
7. लिंग परिवर्तन (केवल शब्द)
8. सर्वनाम (परिभाषा, भेद एवं छाँटना)
9. विलोम शब्द
10. अशुद्धि-शोधन (केवल शब्द)
11. वाक्यांशों के लिए एक शब्द
12. मुहावरे (केवल अर्थ) (पृष्ठ संख्या 68 - 70)
13. विराम चिह्न (पूर्णविराम, अल्पविराम, प्रश्नवाचक)

खण्ड-ग पाठ्य पुस्तक- नवीन सुबोध भारती

पाठ-11 ऐसा मत बोलो तुम! (कविता)

पाठ-12 सोने का हिरन (कहानी)

+ वार्षिक पूर्व परीक्षा के निम्नलिखित पाठ भी वार्षिक परीक्षा में सम्मिलित किए गए हैं -

- पाठ-6 प्यारे से दो पत्र (पत्र)
- पाठ-7 राजा का न्याय (नाटक)
- पाठ-8 कागज़ की नाव (कविता)
- पाठ-9 शहर सुंदर बनाएँ (लेख)

खण्ड-घ रचनात्मक लेखन-

1. लघुकथा लेखन (कोई मनपसंद कहानी अपने शब्दों में लिखना)
2. औपचारिक पत्र लेखन - प्रधानाचार्य को अवकाश हेतु प्रार्थना पत्र, अनौपचारिक पत्र लेखन-निमंत्रण पत्र
3. अनुच्छेद लेखन (विकल्प सहित)

(अनुच्छेद के विषय विद्यार्थियों के बौद्धिक स्तरानुसार होंगे।)

हिंदी लेखन विधा पृष्ठ संख्या - 33 से 40

प्रश्नपत्रों का प्रारूप एवं अंक विभाजन
(Blue Print of the Question Papers)

अर्धवार्षिक पूर्व परीक्षा के प्रश्नपत्र का प्रारूप एवं अंक विभाजन

सेट - ए / बी

समय- 1घण्टा 30 मिनट

पूर्णांक-40

सामान्य निर्देश:

- प्रस्तुत प्रश्नपत्र चार खण्डों में विभाजित है -
- खण्ड- क अपठित बोध 5 अंक
- खण्ड- ख व्याकरण अनुभाग 15 अंक
- खण्ड-ग पाठ्य पुस्तक- नवीन सुबोध भारती 15 अंक
- खण्ड-घ रचनात्मक लेखन 5 अंक

क्र० सं०	उपविषय	अंक	कुल भार
	खण्ड - क अपठित बोध	प्र० xअंक	5अंक
1	गद्यांश पर आधारित प्रश्न बहुविकल्पीय प्रश्न • एक प्रश्न ज्ञान आधारित • दो प्रश्न समझ आधारित वर्णनात्मक • एक प्रश्न आलोचनात्मक/संश्लेषणात्मक	3x1= 3 1x2=2	
	खण्ड-ख व्याकरण अनुभाग		15 अंक
2	भाषा और व्याकरण	2x2= 4	
3	संख्या-ज्ञान	4x1= 4	

4	वचन परिवर्तन (केवल शब्द)	4x1= 4	
5	मुहावरे (केवल अर्थ)	3x1=3	
	खण्ड-ग पाठ्य पुस्तक- नवीन सुबोध भारती		15 अंक
6	गद्यांश पर आधारित प्रश्न बहुविकल्पीय प्रश्न • तीन प्रश्न समझ आधारित	3x1=3	
7	दो शब्दार्थ एवं वाक्य प्रयोग(विकल्प सहित)	2x2= 4	
8	गद्य एवं पद्य पाठों से संबंधित दो प्रश्न (विकल्प सहित) (15 से 25 शब्दों में)	2x2= 4	
9	रिक्त स्थान भरो (दिए गए शब्दों से)	4x1= 4	
	खण्ड-घ रचनात्मक लेखन		5 अंक
10	औपचारिक पत्र - प्रधानाचार्य को अवकाश हेतु प्रार्थना पत्र (शब्द सीमा 35-40 शब्द)	1x5= 5	



वार्षिक पूर्व परीक्षा के प्रश्नपत्र का प्रारूप एवं अंक विभाजन

समय-1 घण्टा 30 मिनट

पूर्णांक- 40

सामान्य निर्देश: पूर्ववत

क्र० सं०	उपविषय	अंक	कुल भार
	खण्ड - क अपठित बोध	प्र० xअंक	5अंक
1	गद्यांश पर आधारित प्रश्न बहुविकल्पीय प्रश्न • एक प्रश्न ज्ञान आधारित • दो प्रश्न समझ आधारित वर्णनात्मक • एक प्रश्न आलोचनात्मक/संश्लेषणात्मक	3x1= 3 1x2=2	
	खण्ड-ख व्याकरण अनुभाग		15 अंक
2	ध्वनि एवं वर्ण ,संयुक्त व्यंजन	4x1= 4	
3	अशुद्धि-शोधन	4x1= 4	
4	विलोम शब्द	4x1= 4	
5	वाक्यांशों के लिए एक शब्द	3x1= 3	
	खण्ड-ग पाठ्य पुस्तक- नवीन सुबोध भारती		15 अंक
	नोट- पाठ्य पुस्तक - नवीन सुबोध भारती (प्रश्न संख्या 6 से 9) के प्रश्नपत्र का प्रारूप एवं अंक विभाजन अर्धवार्षिक पूर्व परीक्षा की भाँति ही रहेगा।		

	खण्ड-घ रचनात्मक लेखन		5 अंक
10	लघुकथा लेखन- (कोई मनपसंद कहानी अपने शब्दों में लिखना) (शब्द सीमा 35-40 शब्द)	1x5= 5	

अर्धवार्षिक परीक्षा के प्रश्नपत्र का प्रारूप एवं अंक विभाजन

सेट - ए / बी

समय-3 घंटे

पूर्णांक-80

सामान्य निर्देश:

- प्रस्तुत प्रश्नपत्र चार खण्डों में विभाजित है –
- खण्ड- क अपठित बोध **10 अंक**
- खण्ड- ख व्याकरण अनुभाग **32 अंक**
- खण्ड- ग पाठ्य पुस्तक- नवीन सुबोध भारती **28 अंक**
- खण्ड- घ रचनात्मक लेखन **10 अंक**

क्र० सं०	उपविषय	अंक	कुल भार
	खण्ड -क अपठित बोध	प्र० xअंक	10अंक
1	दो गद्यांशों पर आधारित प्रश्न बहुविकल्पीय प्रश्न • एक प्रश्न ज्ञान आधारित • दो प्रश्न समझ आधारित वर्णनात्मक • एक प्रश्न आलोचनात्मक/संश्लेषणात्मक	3x1= 3 1x2=2	5 x 2
	खण्ड-ख व्याकरण अनुभाग		32 अंक

2	भाषा और व्याकरण के प्रश्न	4x1= 4	
3	सर्वनाम परिभाषा	1x2= 2	
	सर्वनाम छाँटकर भेद बताना	4x1= 4	
4	संख्या-ज्ञान	4x1= 4	
5	लिंग परिवर्तन	4x1= 4	
6	वचन परिवर्तन	4x1= 4	
7	मुहावरे (केवल अर्थ)	5x1= 5	
8	विराम चिह्न	5x1= 5	
	खण्ड-ग पाठ्य पुस्तक नवीन सुबोध भारती		28 अंक
9	गद्यांश पर आधारित प्रश्न बहुविकल्पीय प्रश्न • पाँच प्रश्न समझ आधारित	5x1= 5	
10	पद्यांश पर आधारित प्रश्न • चार प्रश्न समझ आधारित • एक प्रश्न कविता के केंद्रीय भाव पर आधारित	5x1= 5	
11	दो शब्दार्थ एवं वाक्य प्रयोग (विकल्प सहित)	2x2= 4	
12	गद्य एवं पद्य पाठों से संबंधित तीन प्रश्न (विकल्प सहित) (15 से 25 शब्दों में)	3x2= 6	
13	खाली स्थान भरो (दिए गए शब्दों से)	4x1= 4	
14	दक्षता/योग्यता संबंधी प्रश्न (विकल्प सहित) (30 -35 शब्द)	1x4= 4	
	खण्ड-घ रचनात्मक लेखन		10 अंक

15	औपचारिक पत्र - प्रधानाचार्य को अवकाश हेतु प्रार्थना पत्र (शब्द-सीमा 35-40 शब्द)	1x5= 5	
16	अनुच्छेद लेखन (विकल्प सहित) (शब्द-सीमा 35-40 शब्द)	1x5= 5	

वार्षिक परीक्षा के प्रश्नपत्र का प्रारूप एवं अंक विभाजन

समय- 3 घंटे

पूर्णांक-80

सामान्य निर्देश :पूर्ववत

क्र० सं०	उपविषय	अंक	कुल भार
	खण्ड-क अपठित बोध	प्र० xअंक	10अंक
1	दो गद्यांशों पर आधारित प्रश्न बहुविकल्पीय प्रश्न • एक प्रश्न ज्ञान आधारित • दो प्रश्न समझ आधारित वर्णनात्मक • एक प्रश्न आलोचनात्मक/संश्लेषणात्मक	3x1=3 1x2=2	5 x2
	खण्ड-ख व्याकरण अनुभाग		32 अंक
2	सर्वनाम/विशेषण (परिभाषा)	1x3= 3	
	सर्वनाम/विशेषण छाँटना	5x1= 5	
3	भाषा और व्याकरण / ध्वनि एवं वर्ण / संयुक्त व्यंजन	4x1= 4	
4	लिंग परिवर्तन / वचन परिवर्तन	4x1= 4	
5	पर्यायवाची शब्द (प्रतिशब्द दो पर्यायवाची)	2x2= 4	

6	विलोम शब्द/ वाक्यांशों के लिए एक शब्द	4x1= 4	
7	अशुद्धि-शोधन	4x1= 4	
8	मुहावरे/ विराम चिह्न	4x1= 4	
	खण्ड-ग पाठ्य पुस्तक-नवीन सुबोध भारती		28 अंक
	नोट-पाठ्यपुस्तक- नवीन सुबोध भारती(प्रश्न संख्या 9 से 14) के प्रश्न पत्र का प्रारूप एवं अंक विभाजन अर्धवार्षिक परीक्षा की भाँति ही रहेगा।		
	खण्ड-घ रचनात्मक लेखन		10 अंक
15	पत्र लेखन – • औपचारिक पत्र - प्रधानाचार्य को अवकाश हेतु प्रार्थना पत्र (शब्द-सीमा 35-40 शब्द) अथवा • अनौपचारिक पत्र - निमंत्रण पत्र (शब्द-सीमा 35-40 शब्द)	1x5= 5	
16	• अनुच्छेद लेखन (विकल्प सहित) (शब्द सीमा 35-40) अथवा • लघुकथा लेखन- कोई मनपसंद कहानी अपने शब्दों में लिखना (शब्द सीमा 35-40 शब्द)	1x5= 5	

निर्देश-

- 1) कविता में से वाक्य प्रयोग के लिए शब्द नहीं दिए जाएँगे।
- 2) खाली स्थान पाठों के मध्य से (स्वनिर्मित) भी पूछे जा सकते हैं।

3) प्रति सप्ताह तीन श्रुतलेख अनिवार्य हैं। प्रत्येक माह के अंत में एक श्रुतलेख परीक्षा अपेक्षित है। इस प्रकार अर्धवार्षिक एवं वार्षिक परीक्षा से पूर्व कक्षा में कुल तीन श्रुतलेख परीक्षाएँ (प्रति परीक्षा 10 शब्द एवं दो अनुच्छेद) अपेक्षित हैं। उक्त परीक्षाओं में से किन्हीं दो परीक्षाओं के, जिनमें विद्यार्थी ने सर्वाधिक अंक प्राप्त किए हों, उनके अंक विषय संवर्धन गतिविधि में सम्मिलित किए जाएँगे।

नोटबुक का कार्य एवं रख-रखाव और हिन्दी लेखन विधा पुस्तक आंतरिक मूल्यांकन का अंश होंगी।



SUBJECT – MATHEMATICS

Prescribed Book : e MATH Xplorer

Rachna Sagar Pvt.Ltd

By: Dr.N Madhuri Parti

TERM-I

COURSE FOR PERIODIC TEST – I

Ch-1 Numbers and Numeration

Ch-2 Addition

Ch-3 Subtraction

- Tables : 2 to 10

COURSE FOR HALF YEARLY EXAMS

Ch-4 Multiplication

Ch-5 Division

Ch-6 Fractions

Ch-10 Patterns and Symmetry

- Tables: 2 to 12

+ All the chapters of PT- I mentioned below

Ch- 1 Numbers and Numeration

Ch-2 Addition

Ch-3 Subtraction

TERM-II

COURSE FOR PERIODIC TEST-II

Ch-8 Money

Ch-9 Time

Ch-11 Measurement

- Tables: 2 to 15

COURSE FOR ANNUAL EXAMS

Ch-7 Geometry

Ch-12 Data Handling

Ch-13 Recapitulation of all four operations

Ch-6 Fractions.

(From Term -1)

Tables: 2 to 16

+ All the chapters of PT-II mentioned below

Ch-8 Money

Ch-9 Time

Ch-11 Measurement

QUESTION PAPER PATTERN FOR PERIODIC TEST-I AND PERIODIC TEST-II

Time : 1 hour 30 minutes

M.M.- 40

Question paper consists of four sections :

Section A -2 questions of 1 mark each

$$2 \times 1 = 02$$

Section B -3 questions of 2 marks each

$$3 \times 2 = 06$$

Section C - 4 questions of 3 marks each

$$4 \times 3 = 12$$

Section D - 5 questions of 4 marks each

$$5 \times 4 = 20$$

Total 40

QUESTION PAPER PATTERN FOR HALF YEARLY AND ANNUAL EXAMS

Time : 3 hours

M.M.-80

Question paper consists of four sections :

Section A – 8 questions of 1 mark each

$$8 \times 1 = 08$$

Section B – 5 questions of 2 marks each

$$5 \times 2 = 10$$

Section C – 10 questions of 3 marks each

$$10 \times 3 = 30$$

Section D – 8 questions of 4 marks each

$$8 \times 4 = 32$$

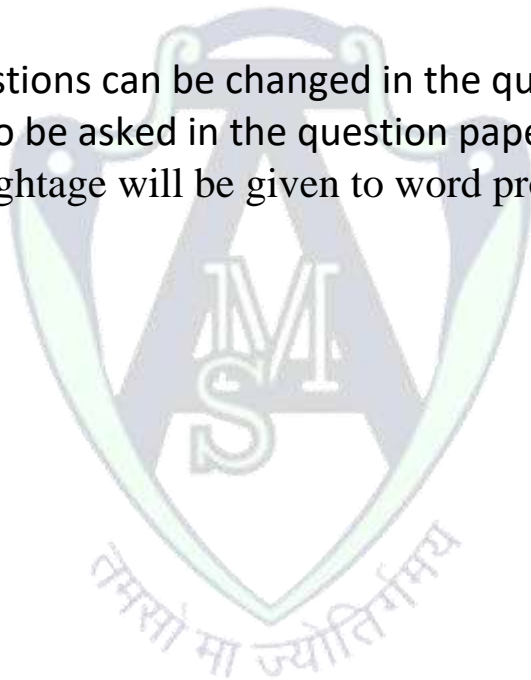
Total 80

Deleted Portion:

- **Critical Thinking, Building Bridges, Math in Action, Mental Maths, Value Building, Board Game , AI in Maths , Project Work, Assertion and Reasoning Questions, Daily Life Connect, Case - Based Question, Fun with Math** given after every chapter are deleted.
- Worksheet given after every chapter is for practice and will not be asked in the exams.

NOTE :

1. The digits of questions can be changed in the question paper.
2. Examples can also be asked in the question paper.
3. At least 35% weightage will be given to word problems in the question paper.



SUBJECT: SCIENCE

Prescribed Book: Illustrative Science 3

By: Ashima Arora, Kavita Thareja, Harshita Khandelwal

Publication: Goyal Brothers Prakashan

TERM-I

COURSE FOR PERIODIC TEST - I

Chapter -1 Living and Non- Living Things

Chapter -7 Housing and Clothing

Chapter- 11 Light, Sound and Force

Diagrams:

- a) Structure of stomata
- b) Luminous and Non-luminous objects (two each)

COURSE FOR HALF YEARLY EXAMS

Chapter - 2 Plants and their Parts

Chapter - 3 Birds

Chapter - 8 Safety and First Aid

Chapter - 12 Air, Water and Weather

+ Chapters of PT-I mentioned below:

Chapter -1 Living and Non- Living Things

Chapter -7 Housing and Clothing

Chapter -11 Light, Sound and Force

Diagrams:

- a) Parts of a leaf
- b) Road safety signs (Any five)
- c) Water cycle

+ Diagrams of PT-I mentioned below:

- d) Structure of stomata
- e) Luminous and Non-luminous objects (two each)

TERM-II

COURSE FOR PERIODIC TEST-II

Chapter – 4 Insects

Chapter - 5 Human Body: A Living Wonder

Chapter – 9 Soil: A Natural Wonder

Chapter - 13 Sun, Moon and Stars

Diagrams:

- a) Excretory System of human beings
- b) Life Cycle of a Butterfly
- c) The Solar System

COURSE FOR ANNUAL EXAMS

Chapter -6 Food, and Feeding Habits of Animals

Chapter -10 Solid, Liquid and Gases

Chapter -14 The Earth

+ Chapters of PT-II mentioned below:

Chapter – 4 Insects

Chapter - 5 Human Body: A Living Wonder

Chapter – 9 Soil: A Natural Wonder

Chapter - 13 Sun, Moon and Stars

Diagrams :

- a) Forms of water
- b) Revolution of the Earth causes seasons

+ Diagrams of PT-II mentioned below:

- c) Excretory System of human beings
- d) Life Cycle of a Butterfly
- e) The Solar System

Question Paper Pattern for Periodic Test-I and II

Time: 1 hour 30 minutes

M.M. 40

	No. of Ques.	Marks	Total
SECTION A			
• Fill in the blank	1	x 1	= 01
• Multiple Choice Question (MCQ)	1	x 1	= 01
• Picture based question	1	x 1	= 01
• One word/one line answer type question	1	x 1	= 01
• Odd one out/ Rewrite the correct sentence by changing the underlined word	1	x 1	= 01
SECTION B			
• Very Short answer type questions	3	x 2	= 06
SECTION C			
• Short answer type questions	3	x 3	= 09
• Figure based question	1	x 3	= 03
• Labelled diagram	1	x 3	= 03
SECTION D			
• Long answer type questions	2	x 5	= 10
SECTION E			
• Case/ Source based question	1	x 4	= 04
			Total = 40

Question Paper Pattern for Half Yearly and Annual Exams

Time: 3 hrs

M.M. 80

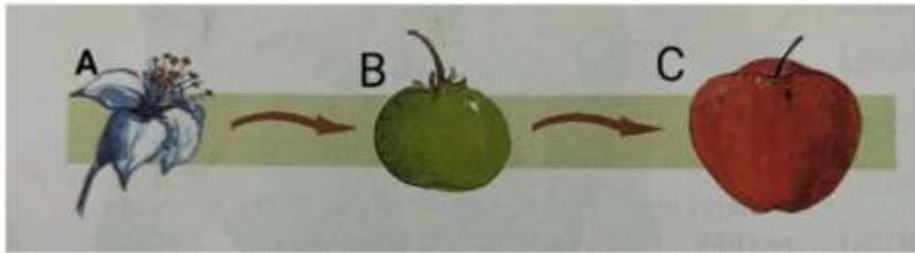
	No. of Ques.		Marks	Total
SECTION A				
• Fill in the blank	2	x	1	= 02
• Multiple Choice Questions (MCQ)	2	x	1	= 02
• Picture based question	2	x	1	= 02
• One word/one line answer type question	2	x	1	= 02
• Odd one out/ Rewrite the correct sentence by changing the underlined word	2	x	1	= 02
SECTION B				
• Very Short answer type questions	7	x	2	= 14
SECTION C				
• Short answer type questions	8	x	3	= 24
• Figure based question	1	x	3	= 03
SECTION D				
• Long answer type questions	4	x	5	= 20
• Labelled diagram	1	x	5	= 05
SECTION E				
• Case/Source based question	1	x	4	= 04
				Total = 80

Note:

- 20% weightage will be given to self-made questions which will be in the form of 1 or 2 marks questions, figure/picture based question and case study based question.
- Only the diagrams which are mentioned in the syllabus will be given in the exams.
- For each Term, weightage of 5 marks will be for Science Note book.

Sample of Figure/Diagram based question

Q. Look at the given picture and answer the questions.



1. Which part of a plant is represented by 'A' and 'C' ? 1
2. Name a fruit that has one seed. 1
3. What does flower grow into? 1

Q. The following question is case/source based question. Read it carefully to answer the questions that follow:-

The Earth is the third planet from the Sun and the only place known to have life. It looks like a bright blue marble from space because more than 70% of its surface is covered by water. The Earth is surrounded by a layer of air called the atmosphere, which gives us oxygen to breathe. Earth has two main movements: it spins like a top (called rotation), which gives us day and night, and it travels around the Sun (called revolution), which gives us different seasons.

1. What is the unique feature of Earth that makes it stand out in our solar system? (1 Mark)
2. What are the two main things the Earth does that affect our lives?(1 Mark)
3. Define Atmosphere . Why it is important for us?

SUBJECT: SOCIAL SCIENCE

Prescribed Book: Time Tales- 3 Social Studies

Published By: Indiannica Learning

TERM – I

COURSE FOR PERIODIC TEST – I

Chapter 1- My Family and Friends

Chapter 4- Plants: Our Green Friends

Chapter 10- The Universe and Our Earth

Chapter 14- States of India

COURSE FOR HALF YEARLY EXAMINATION

Chapter 2- A Trip to the Mela

Chapter 7- Water: A Gift of Nature

Chapter 11- Keeping Oneself Healthy and Safe

Chapter 12- How Are Things Made?

Chapter 17- Dances and Music of India

+ All the chapters of Periodic Test – I mentioned below

Chapter 1- My Family and Friends

Chapter 4- Plants: Our Green Friends

Chapter 10- The Universe and Our Earth

Chapter 14- States of India

Map Work

On the Political Map of India-Locate and Label the following

1. 8 Union Territories of India
2. Capital of India
3. Largest State (area)
4. Smallest State (area)
5. Youngest State
6. State in which you live in and its capital(**Related to Chapter 14- States of India**)

TERM – II
COURSE FOR PERIODIC TEST – II

Chapter 3- Festivals We Celebrate
Chapter 5- Plants, Animals, and Soil
Chapter 8- Food We Eat
Chapter 13- Waste Management
Chapter 16- Physical Features of India

COURSE FOR ANNUAL EXAMINATION

Chapter 6- Living Together
Chapter 9- Things Around Us
Chapter 15- National Symbols of India
+ All the chapters of Periodic Test – II mentioned below
Chapter 3- Festivals We Celebrate
Chapter 5- Plants, Animals and Soil
Chapter 8- Food We Eat
Chapter 13- Waste Management
Chapter 16- Physical Features of India

Map Work

On the Political Map of India-Locate and Label the following

1. Neighbouring Countries of India(China, Bhutan, Nepal, Afghanistan, Pakistan, Bangladesh, Myanmar, Sri Lanka and Maldives)**(Related to Chapter 14- States of India)**
2. Physical Features of India(Northern Mountains, Northern Plains, Great Indian Desert, Peninsular Plateau, Coastal Plains and Islands) **(Related to Chapter 16- Physical Features of India)**

QUESTION PAPER PATTERN FOR PERIODIC TEST-I AND PERIODIC TEST II

Time: 1 hour 30 minutes

M.M: 40

	No. of Ques.		Marks	Total
Section – A (Multiple Choice Based Questions)				
• Identify the image	1	x	1	= 01
• Statement Based	1	x	1	= 01
• Match the column	1	x	1	= 01
• Complete the following statement using the appropriate word	1	x	1	= 01
• State whether the following statement is True or False	1	x	1	= 01
Section – B (Very short answer type questions) (Answer upto 20 words)	6	x	2	=12
Section – C (Short answer type questions) (Answer upto 30 words)	3	x	3	= 09
Section – D(Long/Detailed answer type questions) (Answer upto 60 words)	2	x	5	=10
Section – E (Case/Source based question) (Carries 4 marks with three subparts of 1,1,2 marks)	1	x	4	=04
				Total =40

QUESTION PAPER PATTERN FOR HALF YEARLY AND ANNUAL EXAMINATION

Time: 3 hours

M.M:80

	No. of Ques.		Marks	Total
Section – A (Multiple Choice Based Questions)				
• Identify the image	2	x	1	=02
• Statement Based	2	x	1	=02
• Match the column	2	x	1	=02
• Complete the following statement using the appropriate word	2	x	1	=02
• State whether the following statement is True or False	2	x	1	=02
Section – B (Very short answer type questions) (Answer upto 20 words)	7	x	2	=14

Section – C (Short answer type questions) (Answer upto 30 words)	6	x	3	=18
Section – D(Long/Detailed answer type questions) (Answer upto 60 words)	5	x	5	=25
Section – E (Case/Source based questions) (carry 4 marks each with three subparts of 1,1,2 marks)	2	x	4	=08
Section – F (Map based question) (5 sub parts of 1 mark each)	1	x	5	=05
			Total	=80

Note:

1. 20% weightage will be given to self made questions which will be in the form of 1 or 2 marks questions and Case/Source based questions.
2. For maps – Refer to notebook.
3. For each term a weightage of 5 marks will be awarded for Social Science Notebook.

SAMPLE OF CASE BASED QUESTION

Q. The following question is case/source based question. Read it carefully to answer the questions that follow. 4 Marks

India is the seventh largest country in the world. It lies in the southern part of the Asian continent. It is divided into many states and union territories. There are twenty eight states and eight union territories in India. Each state and union territory has its own capital.

1. Name the capital city of India. [1]
2. Who manages the Union territories of India? [1]
3. Find out the names of the smallest and the largest states of India. [2]

SUBJECT: COMPUTER

Prescribed Book: BitWorld Advanced **(3)**

By: Ravi K. Chugh

FUTUREINK PUBLICATIONS

TERM – 1

Course for Periodic Test – 1

Chapter-1: More About Computers

Chapter-2: Understanding Hardware and Software

Chapter-4: Magical Tux Paint

Course for Half Yearly Exams

Chapter-3: Windows 10 – The Operating System

Chapter-7: Introduction to Microsoft Word

+ All the chapters of PT – 1 mentioned below

Chapter-1: More About Computers

Chapter-2: Understanding Hardware and Software

Chapter-4: Magical Tux Paint

TERM – 2

Course for Periodic Test – 2

Chapter-5: Advanced Paint

Chapter-6: Drawing and More with Paint 3D

Chapter-8: Coding with ScratchJr

Course for Annual Exams

Chapter-9: Moving Ahead with ScratchJr

+ All the chapters of PT – 2 mentioned below

Chapter-5: Advanced Paint

Chapter-6: Drawing and More with Paint 3D

Chapter-8: Coding with ScratchJr

Chapter-1: More About Computers **(from Term – 1)**

QUESTION PAPER PATTERN

Time: 1:30 hrs

M.M. – 40

Section A: Objective Type Questions

12 × 1 = 12 marks

This section consists of 12 questions of 1 mark each.

Questions can be asked in the following formats: -

Section A: Objective Type Questions	No. of questions	Marks
• Multiple Choice Questions	5	5
• One word	7	7
• Fill in the blanks		
• Match the columns		
• Full forms (if any)		
• True/ False		
• Picture Based Question		

Section B: Short Answer Type Questions

08 × 2 = 16 marks

This section consists of 8 questions of 2 marks each.

Section C: Long Answer Type Questions

04 × 3 = 12 marks

This section consists of 4 questions of 3 marks each.

NOTE:

1. 10% weightage will be given to self-made questions.
2. Lab Learning given in the book will be taken up during the lab session.

SUBJECT – G.K. & REASONING APTITUDE

Part A - General Knowledge

M.M. 25

Prescribed Book: Train Your Brain (3)

Publisher: acevision Publisher Pvt. Ltd.

TERM – I

COURSE FOR PERIODIC TEST – I

Nature's Nest

Page No.

- Incredible animals
- Plant puzzle
- Animal defence
- Match the gender

7

8-9

10

11

Quiz-quest 1

12

India infinite

Page No.

- Parts of India
- Must visit
- National parks
- Divine land
- Indian shining stars

14

15

16

17

18

Quiz-quest 2

19

+ Current Affairs of Periodic Test – I

COURSE FOR HALF YEARLY EXAMINATION

Super Science

Page No.

- Science quest
- Discovering space
- Head to toe
- Healthy nutrients

21

22-23

24

25

Quiz-quest 3

26

Book Worm

Page No.

- Classic books 30
- Simple similes 31
- Pick your book 32
- Two ways 33
- In a word 34

Quiz-quest 4

35

+ All Chapters of PT-I mentioned below

Nature's Nest

Page No.

- Incredible animals 7
- Plant puzzle 8-9
- Animal defence 10
- Match the gender 11

Quiz-quest 1

12

India infinite

Page No.

- Parts of India 14
- Must visit 15
- National parks 16
- Divine land 17
- Indian shining stars 18

Quiz-quest 2

19

+ Current Affairs of Half – Yearly Examination only



TERM – II
COURSE FOR PERIODIC TEST – II

Wonder World	Page No.
• Smart sobriquets	37
• Global capitals	38-39
• Monumental marvels	40
• Smart explorers	41
Quiz-quest 5	42
Sport Light	Page No.
• Sporting legends	44
• Guess the sport	45
• The goal game	46-47
• Sports mixed-bag	48
Quiz-quest 6	49
Everyday Skills	Page No.
• Stranger safety	51
• Religious symbols	52
+ Current Affairs of Periodic Test – II only	

COURSE FOR ANNUAL EXAMINATION

Everyday Skills	Page No.
• Let's connect	53
• Table manners	54-55
Quiz-quest 7	56
Mixed Bag	Page No.
• Book land	57
• Folk dances	58
• Movie time	59

- Time to celebrate 60-61
- **Quiz-quest 8** 62
- **Model Test Paper – I** 68-69
- **Model Test Paper – II** 70-71
- **News Recap** 72

+ All Chapters of PT – II mentioned below

Wonder World

Page No.

- Smart sobriquets 37
- Global capitals 38-39
- Monumental marvels 40
- Smart explorers 41
- **Quiz-quest 5** 42

Sport Light

Page No.

- Sporting legends 44
- Guess the sport 45
- The goal game 46-47
- Sports mixed-bag 48
- **Quiz-quest 6** 49

Everyday Skills

Page No.

- Stranger safety 51
- Religious symbols 52

+ Current Affairs of Annual Examination only

NOTE :

1. **Tell Me More – Who?, What?, Where?, When?, Why?, How?** given in the book is only for additional information and will not be asked in the exams.
2. **Fun Spot – Germs and ladders – hygiene (Page No. 28), Fun Spot – Four in a row! and Home hunting (Page No. 29) and**



Think Tank (Page No. 63-67) are only for practice and will not be asked in the exams.

- 3. Prior to Periodic Test – I/ Half Yearly Examination/Periodic Test – II / Annual Examination, Current Affairs will be uploaded on the school app. Student must note the same in their current affairs notebook.**



PART B – REASONING APTITUDE

Prescribed Book: Thinking Skills – 3

Author : K.P. Singh

Published by : VOLT Learning

Term – I

Course for Periodic Test – I

15 marks

Chapter 2. Patterns

Chapter 6. Analogy and Classification

+ Assessment 2 & 6

Course for Half –Yearly Examination

15 marks

Chapter 3. Coding-Decoding

Chapter 4. Mirror Images

+ Assessment 3 & 4

+ All the chapters of PT – I mentioned below

Chapter 2. Patterns

Chapter 6. Analogy and Classification

+ Assessment 2 & 6

Term – II

Course for Periodic Test – II

15 marks

Chapter 1. Alphabet Test

Chapter 5. Embedded Figures

+ Assessment 1 & 5

Course for Annual Examination

15 marks

Chapter 7. Ranking Test

+ Assessment 7

+ All the chapters of PT – II mentioned below

Chapter 1. Alphabet Test

Chapter 2. Patterns (**From Term – I**)
Chapter 5. Embedded Figures
+ Assessment 1, 2 & 5

**Paper Pattern and Marking Scheme
For Periodic Test – I/Periodic Test – II/
Half Yearly Examination/Annual Examination (2026 – 2027)**

Part A – GENERAL KNOWLEDGE

M. M. = 25

- 1. G.K Book 20 Qs × 1 mark = 20
 - 2. Current Affairs 10 Qs × 1/2 mark = 05
- Total marks = 25**
No. of questions = 30

NOTE:

1. The above question paper will consist **only of Multiple-Choice Questions (MCQs)**.
Even for the mentioned rubrics, **options will be provided**.
2. Questions may be asked in the following formats:
 - One word
 - Fill in the blanks
 - Match the pairs
 - True/False
 - Abbreviations
 - Name the terms, etc.

Part B – REASONING APTITUDE

M.M. = 15

- 15 questions of 1 mark each

15 Qs × 1 mark = 15

Total marks = 15

No.of questions = 15

NOTE:

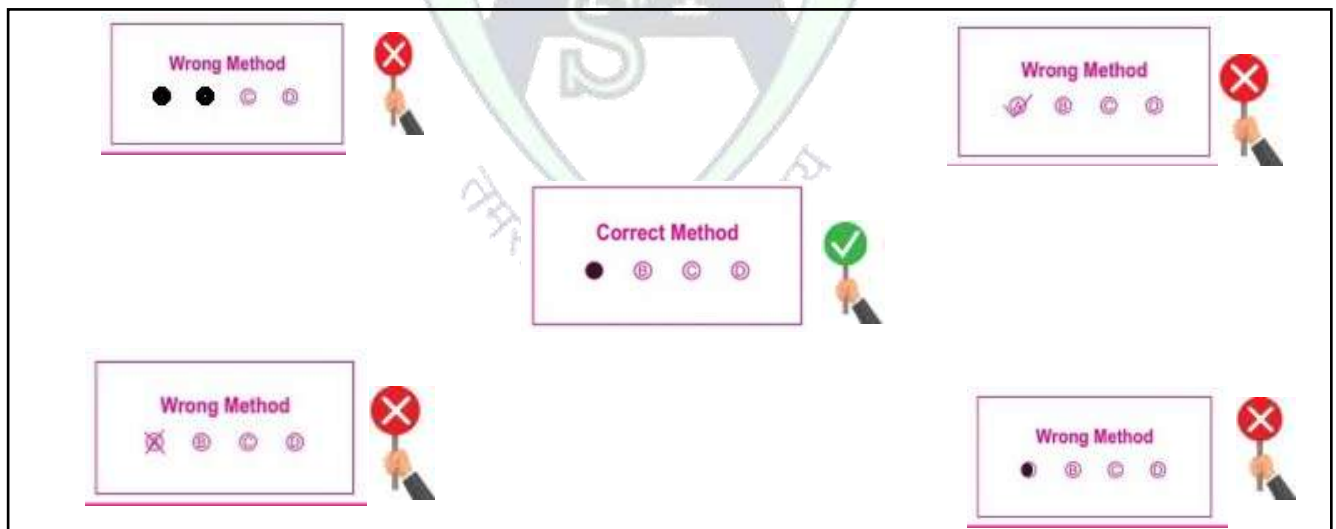
- **The entire paper of Reasoning Aptitude will be self-made, keeping the concept same.**
- **Exercises of Assertion and Reasoning are not included in the syllabus.**

General Instructions : -

1. There will be a combined question paper for General Knowledge and Reasoning Aptitude.
2. The maximum marks for the combined paper will be 40 and time duration will be 1 hour 30 minutes.
3. General Knowledge will carry 25 marks and Reasoning Aptitude will carry 15 marks.
4. The entire question paper will consist of Multiple-Choice Questions only.
5. Four options (A, B, C, D) will be given in each question.
6. Answer sheet will be given by the school in the form of OMR sheet.
7. All the entries of OMR sheet should be done very carefully.
8. Use a dark lead pencil only to fill the bubbles in OMR sheet.

IMPORTANT INSTRUCTIONS FOR FILLING OMR SHEET

1. Fill all the entries very carefully.
2. For class III, use dark lead pencil only to fill the bubbles.
3. For classes IV to VIII, use Black/Blue ball point pen only. Any type of cutting/ overwriting/ use of white fluid and pencil/ other pen is strictly prohibited. Non-compliance may lead to declare the OMR Sheet invalid.
4. Bubbles should be filled completely. Multiple fillings are invalid.
5. There is only one correct answer for each question.
6. Mark your answer only in appropriate bubble against the number corresponding to the question.
7. For example: To mark the response of question 7, student has to darken the correct bubble in front of serial number 7 in OMR sheet.
8. Do not fold/ mutilate or make any stray marks on OMR Sheet.
9. Do not do any rough work on the OMR sheets. Use the rough sheets provided by the school.
10. Some samples of wrong/ correct ways are shown below :



OMR SHEETS WILL BE SCANNED AND EVALUATED THROUGH A SOFTWARE. HENCE ANY DEVIATION FROM THE INSTRUCTIONS MENTIONED ABOVE WILL LEAD TO NON-EVALUATION OF THE OMR SHEET AUTOMATICALLY.

SUBJECT: ART

Prescribed Book: Art Utsav – 3 (Pristine Education)

Term – I Course For Half Yearly Exams

Colouring Work

1. Car
2. Doodle Pattern
3. Submarine
4. Underwater World
5. Penguin
6. Landscape
7. Mouse's Face (Cubism Art)
8. Design in Triangle

+ Art Utsav Book Page no. 3 to 21

Term – II Course For Annual Exams

Colouring Work

1. Ladybird
2. Urn
3. Scenery
4. Fruits with Dot Impressions
5. Onam Festival Scene
6. Teddy Bear
7. Bus
8. Design in Square

+ Art Utsav Book Page no. 22 to 40

QUESTION PAPER PATTERN FOR HALF YEARLY AND ANNUAL EXAMS

Time: 3 hrs.

M.M: 40

Instructions:

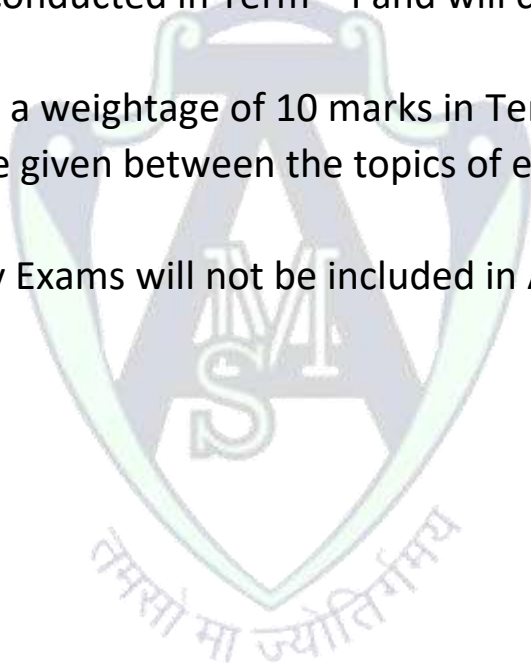
Attempt one question from colouring and one from shading.

Q1. Draw any one topic and colour it. (1 out of 2) 25 Marks

Q2. Draw any one topic and colour it. (1 out of 2) 15 Marks

NOTE:

1. Class activity will be conducted in Term – I and will carry a weightage of 10 marks.
2. Drawing file will have a weightage of 10 marks in Term – II.
3. Internal choice will be given between the topics of each colouring and shading work.
4. Syllabus of Half Yearly Exams will not be included in Annual Exams.



SUBJECT: HEALTH AND PHYSICAL EDUCATION – 3

MM: 10

1. Practical: 5 marks

2. Viva: 5 marks

Note: Marks will be converted into Grades in the Report Card.

PRESCRIBED BOOK:

A Better You - Part B: HEALTH AND PHYSICAL EDUCATION - 3 (Provided by the school, available on school website www.ashamodernjuniorhighschool.com)

Term – 1

Course for Half-Yearly Examination

UNIT-1 SAFETY MEASURES AT VARIOUS PLACES

UNIT-2 SENSE ORGANS

Term – 2

Course for Annual Examination

UNIT-3 INTRODUCTION OF YOGA

UNIT-4 MOVEMENTS